



### CARE INSTRUCTIONS

Daily cleaning can be done by wiping the frame with a clean dry cloth. Should the surface need more attention this can be cleaned with water and a light detergent or soap applied with a damp cloth. Wipe after with a clean dry cloth. Avoid any abrasive materials.

### TROUBLESHOOTING

If lamp does not light, turn off the power. Check the bulb for a broken filament. Replace bulb if necessary, then turn it on. If the lamp still does not light, please contact customer service at the local dealer. If the external flexible cable or cord of this lamp is damaged, it must be replaced by a qualified electrician in order to avoid a hazard.

### TECHNICAL INFORMATION

Light sources: E27, ~400 Lumen (30W Halogen, ~4-5W LED Dimmable). Turn power off when changing light bulb. Isolation class II. The lamp is not approved for outdoor use or use in damp/wet rooms (IP20).

### SAFETY INSTRUCTIONS

Turn power off when changing light bulb. Isolation class II. The lamp is not approved for outdoor use or use in damp/wet rooms (IP20).



For enquiries contact GUBI A/S - CVR: 17940384  
Klubiensvej 7-9. 2150 Nordhavn. Copenhagen, Denmark  
T +45 69 15 60 60 – [order@gubi.com](mailto:order@gubi.com)  
[GUBI.COM](http://GUBI.COM)

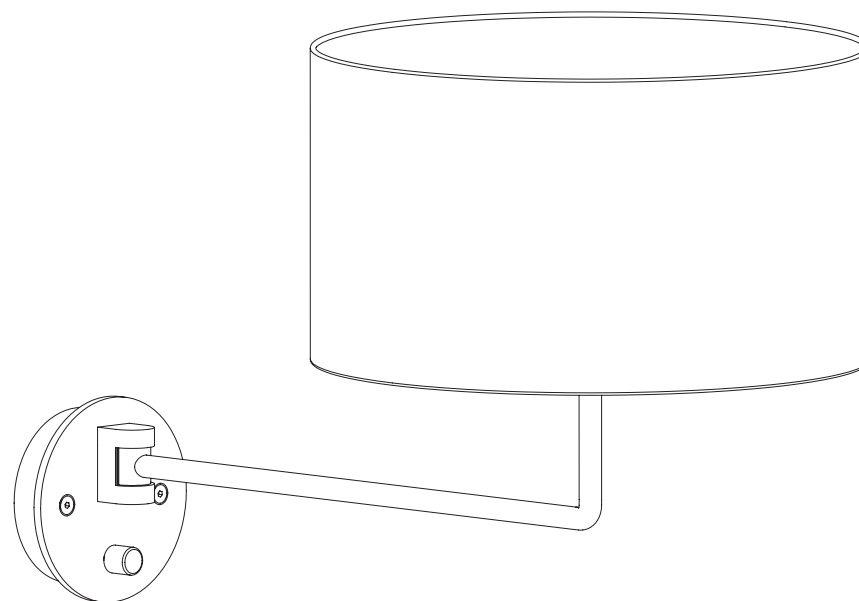
69-20-012-01 Assembly Instructions Gravity Bedside Lamp - Large.

# GUBI

## ASSEMBLY INSTRUCTIONS

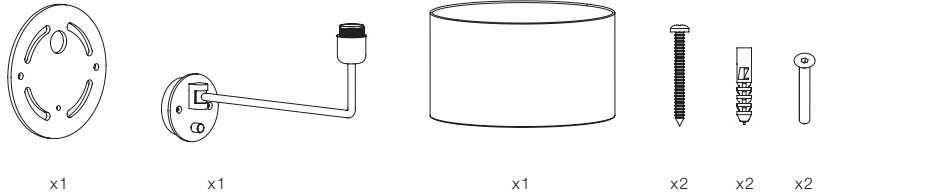
*for*

## Gravity Bedside Lamp - Large



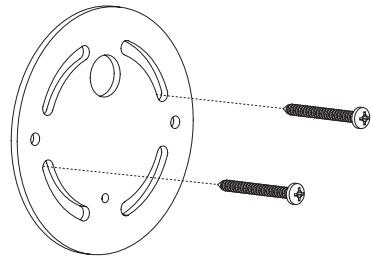
### CONTENTS

*Gravity Bedside Lamp - Large*



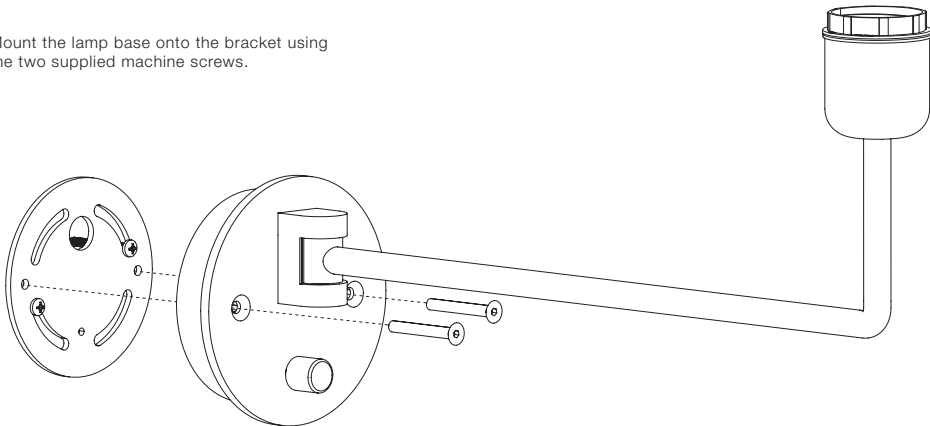
### 1.

Mount the wall bracket using the two supplied wood screws.



### 2.

Mount the lamp base onto the bracket using the two supplied machine screws.

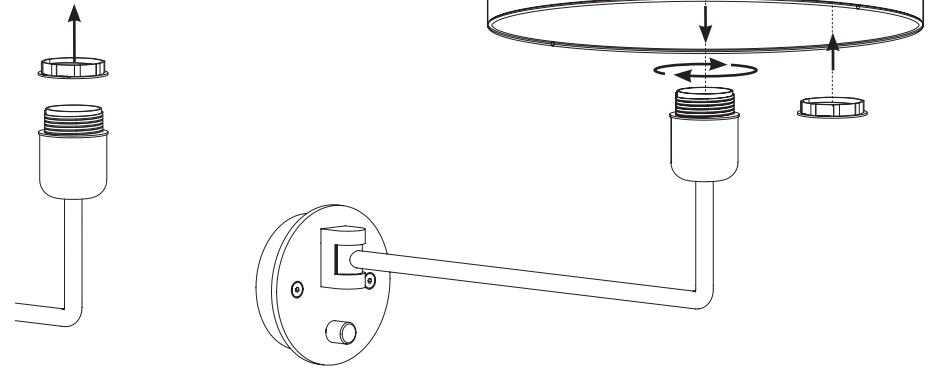


### 3.

Remove the threaded plastic ring from the socket.

Place the lamp shade on the socket.

Replace the threaded plastic ring to secure the shade on the socket.



### 4.

Insert light bulb. Turn lamp on and dim by rotating the dimmer switch.

